

BELAIRE

HILLSIDE RESIDENCIES





SET YOUR SIGHTS ON GLORIOUS MOUNTAINS
DESIGNED WITH SENSATIONAL AMENITIES



Step into a realm of lavish living and vibrant sophistication with BelAire's prodigious and exquisite communities. We build homes that redefine living standards, putting your needs and aspirations first. We develop thriving neighbourhoods that reflect the quality of life you deserve. We create healthy, lively communities that blend extravagance with glamour and white-gloved finesse.



BELAIRE

HILLSIDE RESIDENCIES



Belaire is more than just a community, it is a way of life. It's a balance of open spaces and beautiful homes that soothes the senses and puts your mind at rest as you take in the majestic hills and spectacular trails.



EVERGREEN SERENITY

Nestled in the foothills of Dagshai, this green jewel offers a meticulously designed lifestyle that harmoniously blends nature and tranquility, providing an ideal escape from the city without compromise.

AMENITIES

Residents of Belaire live in prime luxury, with ready access to numerous amenities.

- 01/ Gymnasium
- 02/ Swimming Pool
- 03/ Yoga Centre
- 04/ Badminton Court
- 05/ Outdoor Play Area
- 06/ Restaurant
- 07/ Gated Community with 24/7 Security
- 08/ Daily Need Shops
- 09/ Housekeeping
- 10/ Pet Friendly



ACTUAL IMAGE - SITE OFFICE



A BREATH OF FRESH AIR

Belaire is pure manifestation of finesse and art blended with convenience, designed to exude the utmost comfort and pleasure.

The project perfectly brings together the serenity and tranquility with ultra-modern amenities.

LOCATION MAP



ADDRESS INFO

SCO 1B-1C, 3rd Floor, JLPL, Sector 66-A, International Airport Road, Mohali
Site Address: Belaire, Kumarhatti-Nahan Road (NH-907 A), Post Office - Dagshai, District Solan,
Himachal Pradesh - 173210

BELAIRE

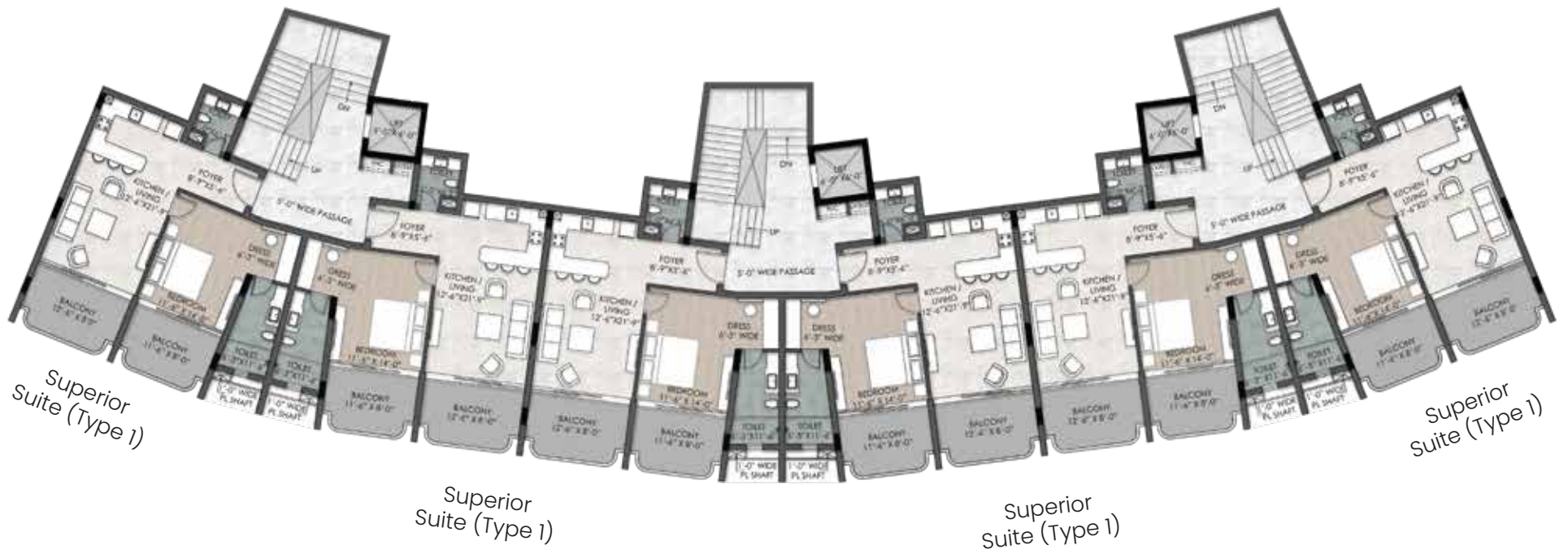
HILLSIDE RESIDENCIES

SITE PLAN

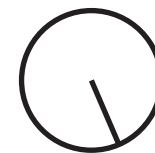
Overlooking the beautiful view of mountains and located in close proximity to some of the most iconic landmarks of Himachal Pradesh, Belaire is the perfect combination of privacy and connectivity, bringing a true sense of belonging to its community.



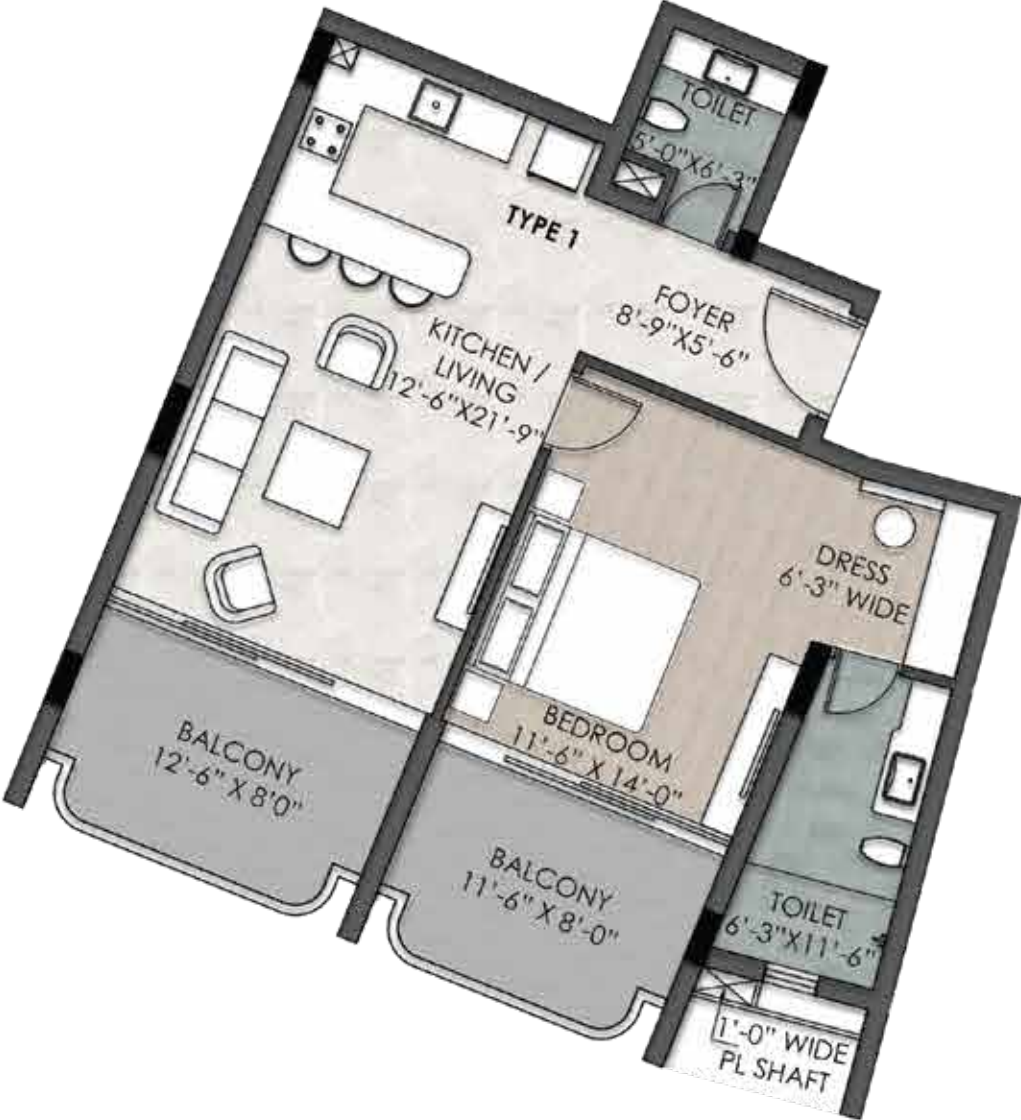
THISTLE



TYPICAL FLOOR PLAN
GROUND & 1ST FLOOR
THISTLE



THISTLE

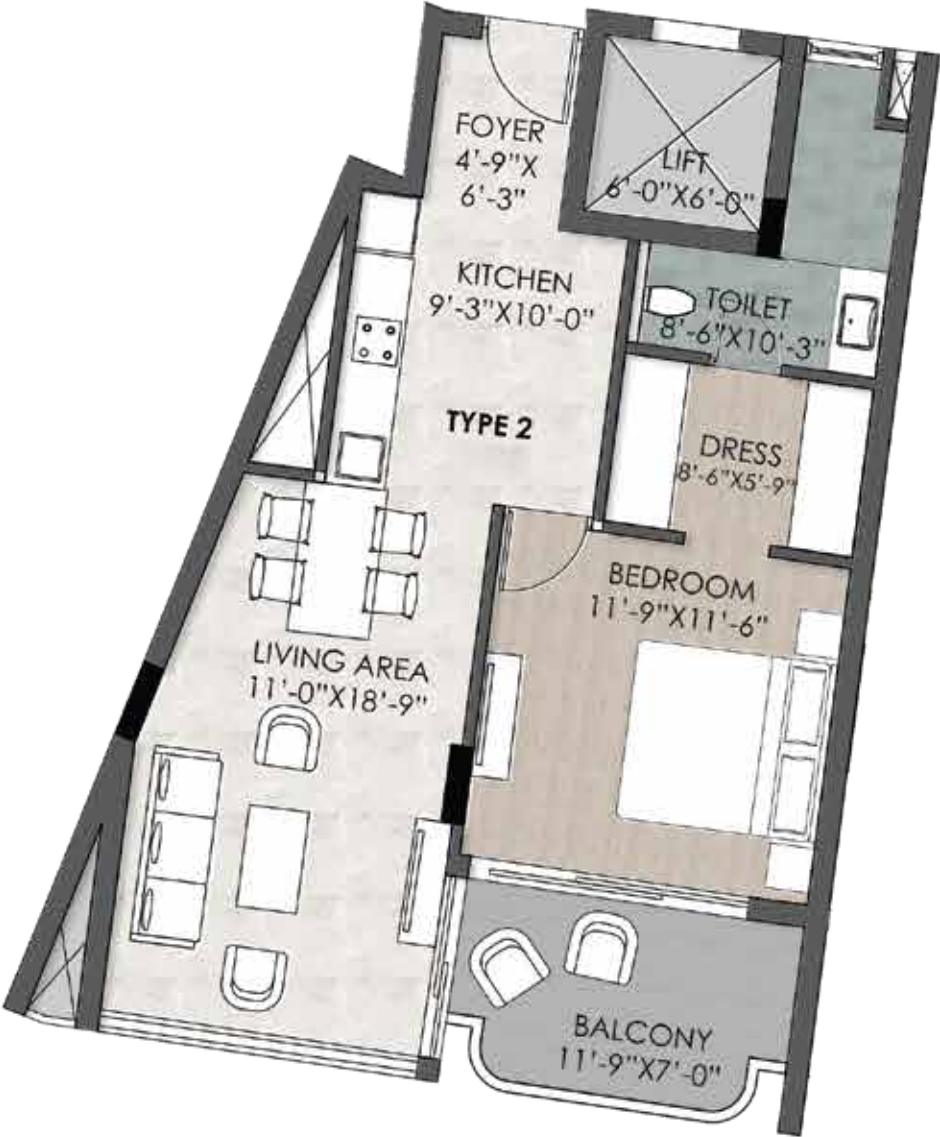


SUPERIOR SUITES

TYPICAL FLOOR PLAN

TOTAL SUPER AREA	1264 SQ.FT.
BUILT UP AREA	916 SQ.FT.

THISTLE



SUPERIOR SUITES

TYPICAL FLOOR PLAN

TOTAL SUPER AREA	1014 SQ.FT.
BUILT-UP AREA	735 SQ.FT.

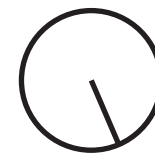
THISTLE



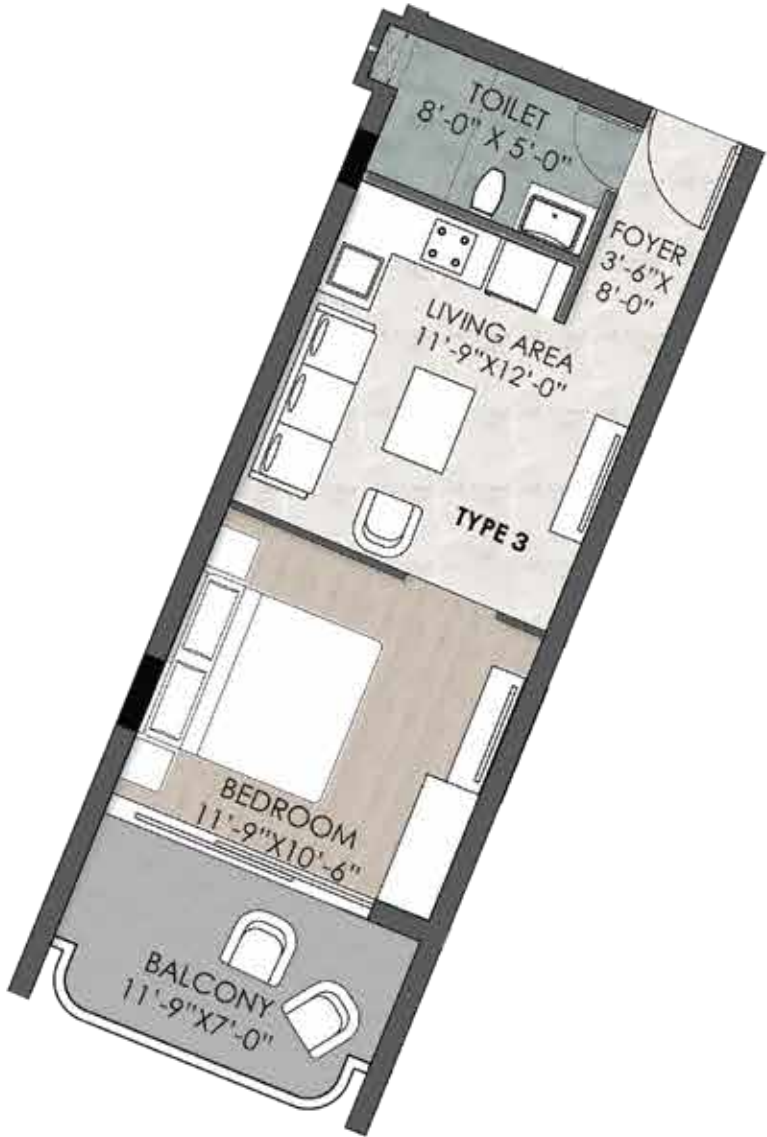
TYPICAL FLOOR PLAN

3RD TO 6TH FLOOR

THISTLE



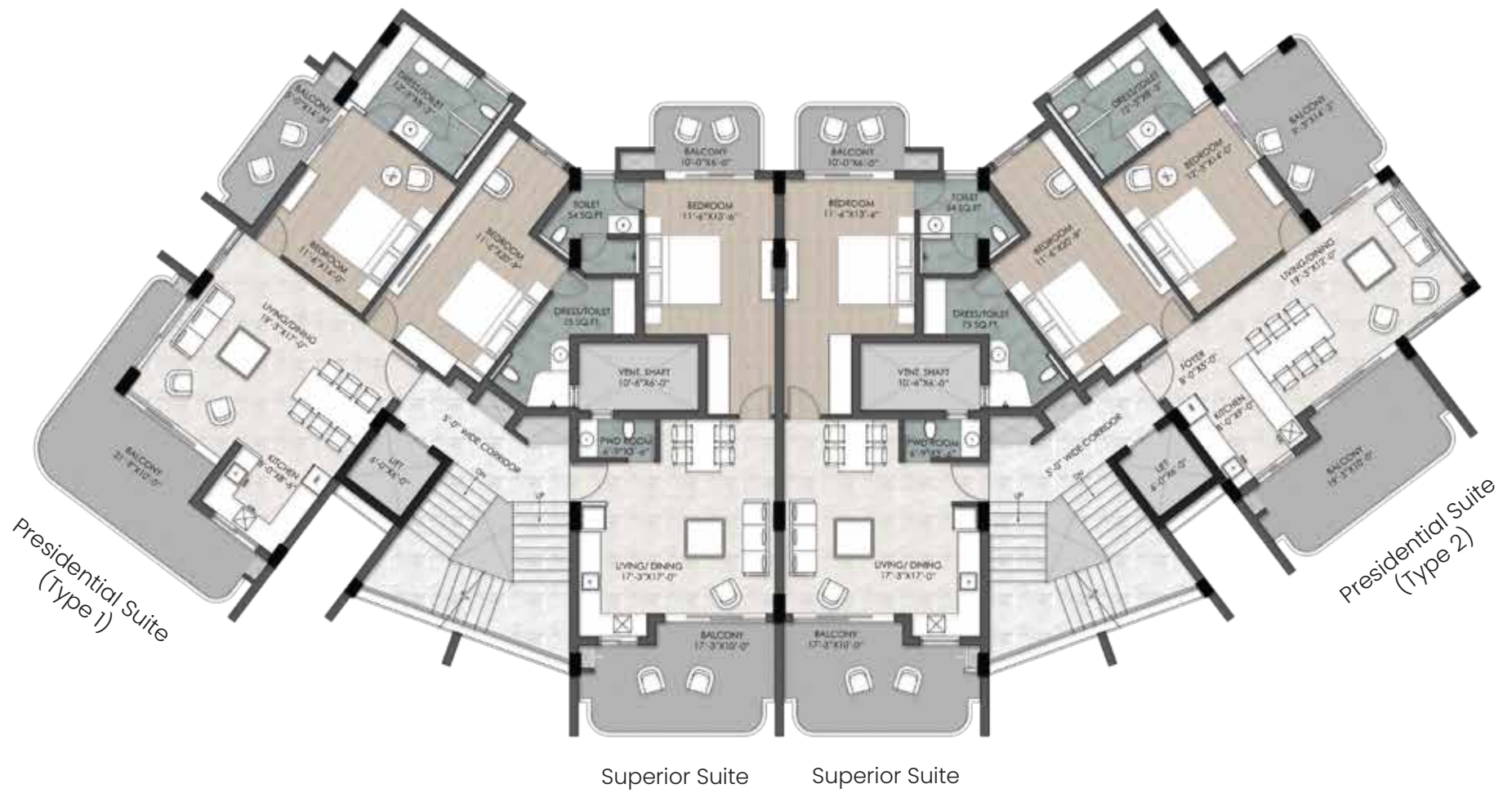
THISTLE



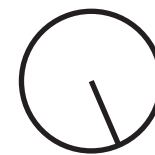
CLASSIC SUITES
TYPICAL FLOOR PLAN

TOTAL SUPER AREA	660 SQ.FT.
BUILT-UP AREA	478 SQ.FT.

NETTLE



TYPICAL FLOOR PLAN
NETTLE



NETTLE



SUPERIOR

TYPICAL FLOOR PLAN

SUPER AREA	1206 SQ.FT.
BUILT-UP AREA	874 SQ.FT.

NETTLE



PRESIDENTIAL TYPE 1
TYPICAL FLOOR PAN

SUPER AREA	1866 SQ.FT.
BUILT-UP AREA	1352 SQ.FT.

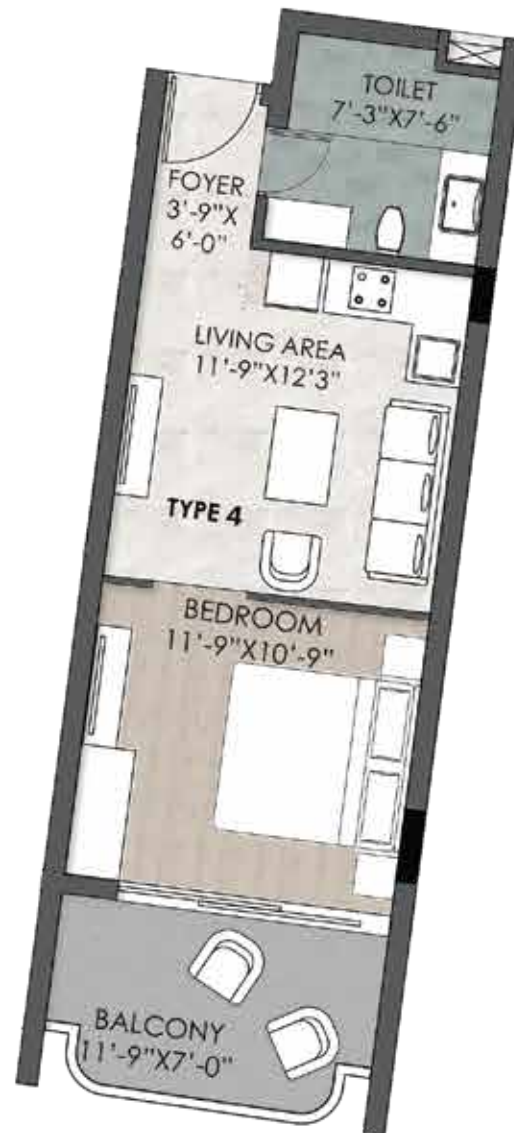
NETTLE



PRESIDENTIAL TYPE 2
TYPICAL FLOOR PLAN

SUPER AREA	1856 SQ.FT.
BUILT-UP AREA	1345 SQ.FT.

THISTLE



CLASSIC SUITES
TYPICAL FLOOR PLAN

TOTAL SUPER AREA	678 SQ.FT.
BUILT-UP AREA	491 SQ.FT.



INTERIOR FEATURES

WHITE GOODS

- Smart TV
- Digital Safe
- Geysers & Exhaust Fans
- Chimney
- Induction Plate
- Microwave
- Refrigerator
- Water Purifier
- Room Heating

FURNITURE & FIXTURES

- Double Bed with Night Stands
- Spring Mattress
- Bed Linen
- Curtains
- Sofa with Centre Table
- Dining Table
- Outdoor Furniture
- Decorative Lights
- Vanity with Mirror
- Crockery/Cutlery / Cookware

**Interiors by Renowned Designers*



TECHNICAL SPECIFICATIONS

Bedroom & Living Room	<ul style="list-style-type: none"> • External Window • Doors • Flooring • Walls • Others 	<ul style="list-style-type: none"> • UPVC/Aluminium • Flush Doors/Shutters with hardwood frame/Steel doors • Acrylic emulsion • Wardrobes in all bedrooms
Modular Kitchen	<ul style="list-style-type: none"> • Walls • Flooring • Kitchen Slab • External Windows • Walls 	<ul style="list-style-type: none"> • Glazed tiles up to 2 ft. from slab level • Vitrified tiles • Granite • UPVC/Aluminium • Acrylic emulsion
Bathrooms	<ul style="list-style-type: none"> • Walls • Flooring • Doors • External Window • Fitting 	<ul style="list-style-type: none"> • Glazed tiles up to door height and Acrylic emulsion • Anti skid tiles • Flush doors with polish/paint • UPVC/Aluminium • Branded Chinaware & CP Fittings
Staircase/ Common Corridors	<ul style="list-style-type: none"> • Walls • Flooring • Others 	<ul style="list-style-type: none"> • Acrylic emulsion • Granite • MS railing
Balconies	<ul style="list-style-type: none"> • Flooring • Others 	<ul style="list-style-type: none"> • Vitrified Tiles • Glass
Power Backup	<ul style="list-style-type: none"> • Paid Power Backup 	<ul style="list-style-type: none"> • 3 KVA to 5 KVA (As per category of apartments)
Electrical Work	<ul style="list-style-type: none"> • Electrical Work 	<ul style="list-style-type: none"> • Modular switches, Cable, TV & Telephone points
Finishing	<ul style="list-style-type: none"> • Internal Finish • External Finish 	<ul style="list-style-type: none"> • Acrylic emulsion/putty on walls & all room ceilings • Exterior emulsion weather proof paint/texture paint
Plumbing Work	<ul style="list-style-type: none"> • Plumbing Work 	<ul style="list-style-type: none"> • SWR, PPR, CPVC, UPVC pipes of reputed make