

BELAIR

HILLSIDE RESIDENCIES





SET YOUR SIGHTS ON GLORIOUS MOUNTAINS
OVERFLOWING WITH SENSATIONAL AMENITIES



Step into a realm of lavish living and vibrant sophistication with BelAir's prodigious and exquisite communities. We build homes that redefine living standards, putting your needs and aspirations first. We develop thriving neighbourhoods that reflect the quality of life you deserve. We create healthy, lively communities that blend extravagance with glamour and white-gloved finesse.



BELAIR

HILLSIDE RESIDENCIES



BelAir is more than just a community, it is a way of life.
Its a balance of open spaces and beautiful homes
that soothes the senses and puts your mind at rest
as you take in the majestic ghatis and
spectacular trails.



EVERGREEN SERENITY

Nestled in the foothills of Dagshai, this green jewel offers a meticulously designed lifestyle that harmoniously blends nature and tranquility, providing an ideal escape from the city without compromise.

AMENITIES

Residents of BelAir live in prime luxury,
with ready access to numerous amenities.

01/ Gymnasium

02/ Swimming Pool

03/ Yoga Centre

04/ Badminton Court

05/ Outdoor Play Area

06/ Restaurant

07/ Gated Community with 24/7 Security

08/ Daily Need Shops

09/ Housekeeping

10/ Pet Friendly



ACTUAL IMAGE - SITE OFFICE



A BREATH OF FRESH AIR

BelAir is pure manifestation of finesse and art blended with convenience, designed to exude the utmost comfort and pleasure.

The project perfectly brings together the serenity and tranquility with ultra-modern amenities.

LOCATION MAP



ADDRESS INFO

SCO 1B-1C, 3rd Floor, JLPL, Sector 66-A, International Airport Road, Mohali
Site Address: BelAir, Kumarhatti-Nahan Road (NH-907 A), Post Office - Dagshai, District Solan,
Himachal Pradesh - 173210

SITE PLAN

Overlooking the beautiful view of mountains and located in close proximity to some of the most iconic landmarks of Himachal Pradesh, BelAir is the perfect combination of privacy and connectivity, bringing a true sense of belonging to its community.

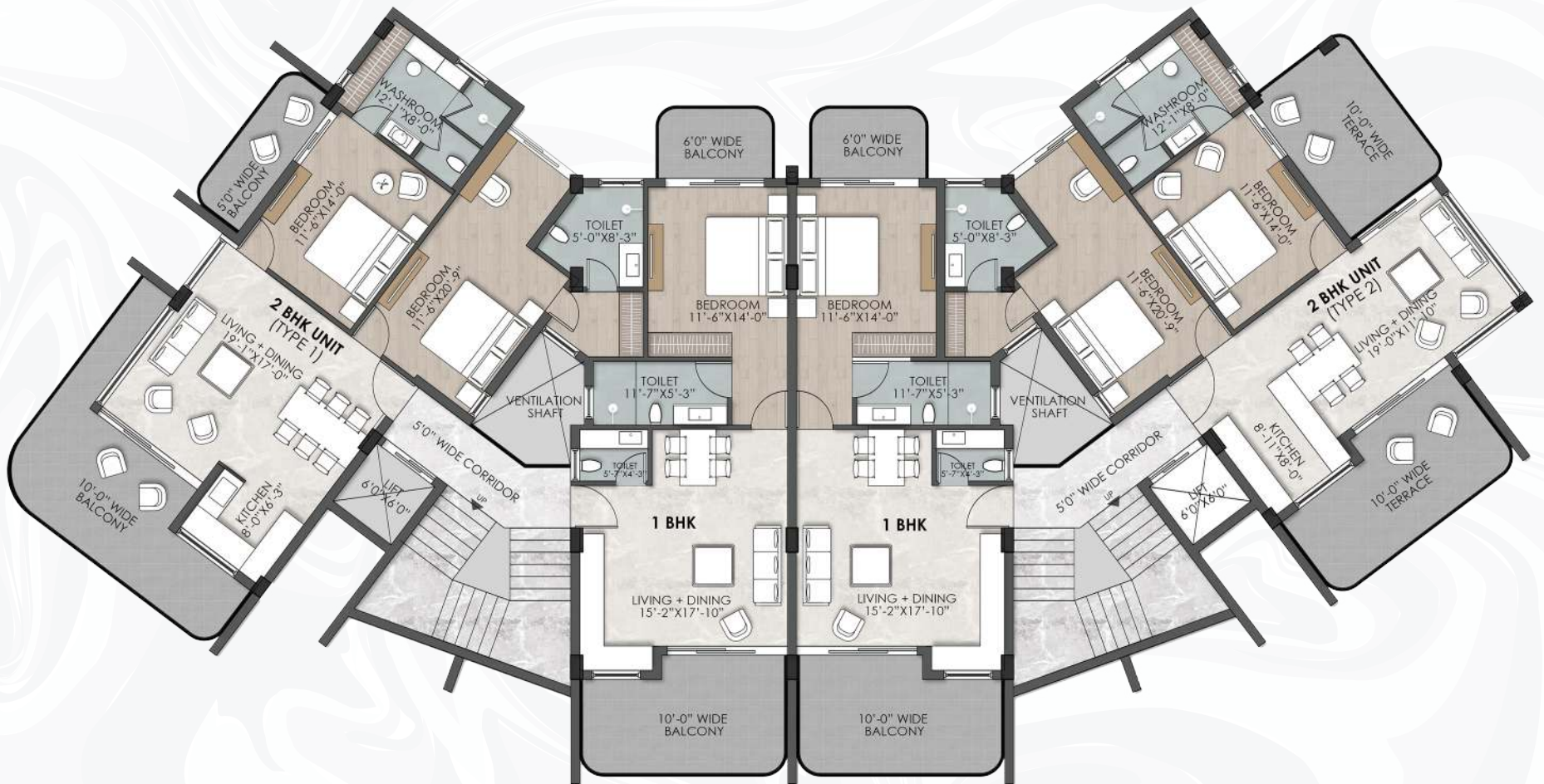


*VASTU COMPLIANT

The background of the entire image is a light gray marbled pattern with swirling, organic shapes.

BELAIR

HILLSIDE RESIDENCIES



1 BHK+2 BHK BLOCK
TYPICAL FLOOR PLAN
NETTLE





1 BHK UNIT
TYPICAL FLOOR PLAN



SUPER AREA	BUILT UP + BALCONY
1158 sq.ft	864 sq.ft



2 BHK UNIT
TYPE 1
TYPICAL FLOOR PLAN



SUPER AREA	BUILT UP + BALCONY
1832 sq.ft	1367 sq.ft



2 BHK UNIT

TYPE 2

TYPICAL FLOOR PLAN



SUPER AREA	BUILT UP + BALCONY
1809 sq.ft	1350 sq.ft



INTERIOR FEATURES

WHITE GOODS

- Smart TV
- Digital Safe
- Geysers & Exhaust Fans
- Chimney
- Induction Plate
- Microwave
- Refrigerator
- Water Purifier
- Room Heating

FURNITURE & FIXTURES

- Double Bed with Night Stands
- Spring Mattress
- Bed Linen
- Curtains
- Sofa with Centre Table
- Dining Table
- Outdoor Furniture
- Decorative Lights
- Vanity with Mirror
- Crockery/Cutlery / Cookware

****Interiors by Renowned Designers***



TECHNICAL SPECIFICATIONS

Bedroom & Living Room	<ul style="list-style-type: none">• External Window• Doors• Flooring• Walls• Others	<ul style="list-style-type: none">• UPVC/Aluminium• Flush Doors/Shutters with hardwood frame/Steel doors• Acrylic emulsion• Wardrobes in all bedrooms
Modular Kitchen	<ul style="list-style-type: none">• Walls• Flooring• Kitchen Slab• External Windows• Walls	<ul style="list-style-type: none">• Glazed tiles up to 2 ft. from slab level• Vitrified tiles• Granite• UPVC/Aluminium• Acrylic emulsion
Bathrooms	<ul style="list-style-type: none">• Walls• Flooring• Doors• External Window• Fitting	<ul style="list-style-type: none">• Glazed tiles up to door height and Acrylic emulsion• Anti skid tiles• Flush doors with polish/paint• UPVC/Aluminium• Branded Chinaware & CP Fittings
Staircase/ Common Corridors	<ul style="list-style-type: none">• Walls• Flooring• Others	<ul style="list-style-type: none">• Acrylic emulsion• Granite• MS railing
Balconies	<ul style="list-style-type: none">• Flooring• Others	<ul style="list-style-type: none">• Vitrified Tiles• Glass
Power Backup	<ul style="list-style-type: none">• Paid Power Backup	<ul style="list-style-type: none">• 3 KVA to 5 KVA (As per category of apartments)
Electrical Work	<ul style="list-style-type: none">• Electrical Work	<ul style="list-style-type: none">• Modular switches, Cable, TV & Telephone points
Finishing	<ul style="list-style-type: none">• Internal Finish• External Finish	<ul style="list-style-type: none">• Acrylic emulsion/putty on walls & all room ceilings• Exterior emulsion weather proof paint/texture paint
Plumbing Work	<ul style="list-style-type: none">• Plumbing Work	<ul style="list-style-type: none">• SWR, PPR, CPVC, UPVC pipes of reputed make